



PRINCE Dr. K. VASUDEVAN COLLEGE OF ENGINEERING AND TECHNOLOGY

(Approved by AICTE, Affiliated to Anna University & ISO 9001:2015 Certified Institution)
Medavakkam-Mambakkam Main Road, Ponmar, Chennai-600127

FACULTY FEEDBACK ON SYLLABUS – ANALYSIS REPORT

Academic Year **2020-21**
Department **Computer Science and Engineering**
Number of Respondents **6**

Rate the curriculum / syllabus on the following points

| S. No | Feedback on Syllabus | Strongly agree | Agree | Neutral | Disagree | Strongly Disagree |
|-------|---|----------------|-------|---------|----------|-------------------|
| | | 5 | 4 | 3 | 2 | 1 |
| 1 | Is the course objective are illustrated clearly to the need of the students? | 8 | 3 | 1 | 0 | 0 |
| 2 | Are you satisfied with the existing syllabus which you are handling? | 9 | 2 | 0 | 0 | 1 |
| 3 | Is the syllabus designed based on average student level? | 10 | 2 | 0 | 0 | 0 |
| 4 | Is the syllabus providing the basic knowledge to carry out the field project/Internship? | 11 | 0 | 1 | 0 | 0 |
| 5 | Is the curriculum designed by university is more relevant to the department background? | 10 | 2 | 0 | 0 | 0 |
| 6 | Is the syllabus well organized and easy to follow by the students? | 10 | 1 | 0 | 1 | 0 |
| 7 | Is the syllabus covered fundamentals, advanced topics and ensures balance between theory & Applications | 9 | 3 | 0 | 0 | 0 |

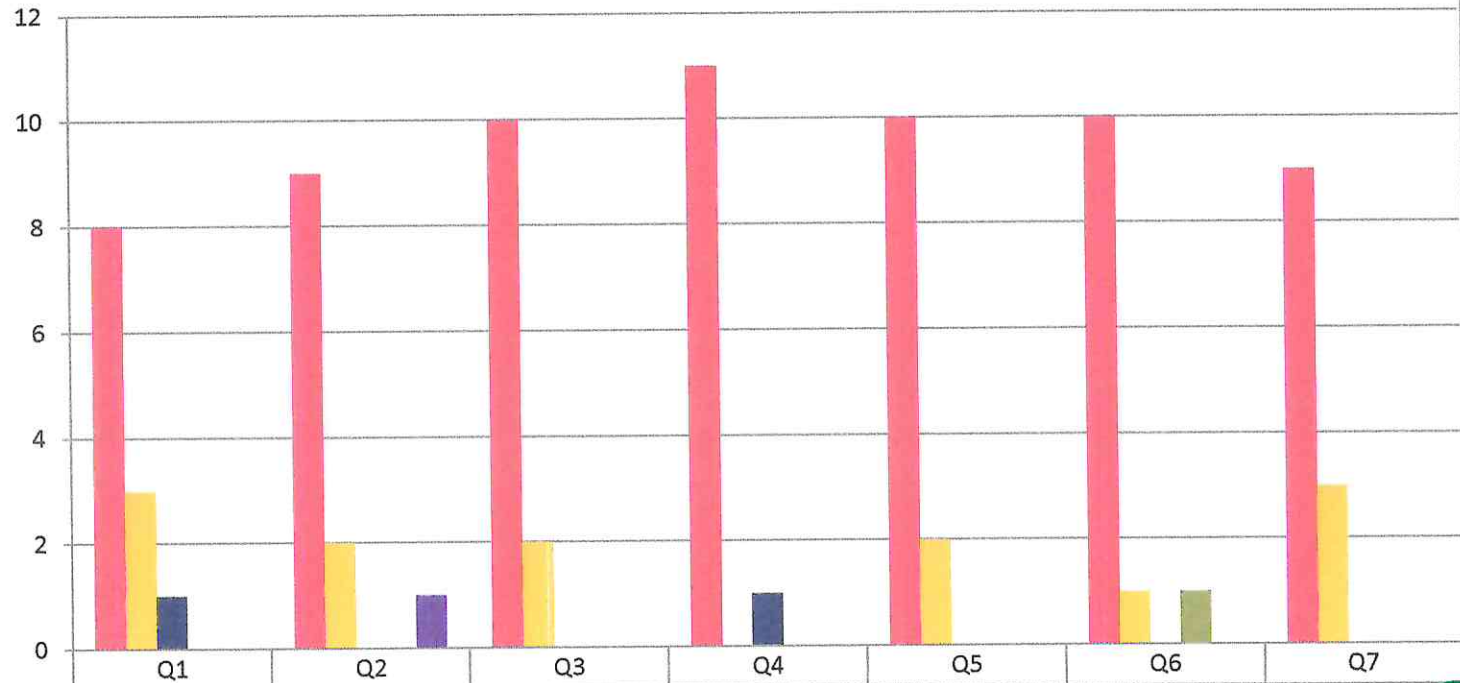
PRINCIPAL
PRINCE DR. K. VASUDEVAN COLLEGE OF
ENGINEERING AND TECHNOLOGY
PONMAR, CHENNAI-600 127,



PRINCE Dr. K.VASUDEVAN COLLEGE OF ENGINEERING AND TECHNOLOGY

(Approved by AICTE, Affiliated to Anna University & ISO 9001:2015 Certified Institution)
Medavakkam-Mambakkam Main Road, Ponmar, Chennai-600127

FACULTY FEEDBACK ON SYLLABUS - 2020-2021 Compuere Science and Engineering (NUMBER OF RESPONDENTS - 6)



| | | | | | | | |
|-------------------|---|---|----|----|----|----|---|
| Strongly agree | 8 | 9 | 10 | 11 | 10 | 10 | 9 |
| Agree | 3 | 2 | 2 | 0 | 2 | 1 | 3 |
| Neutral | 1 | 0 | 0 | 1 | 0 | 0 | 0 |
| Disagree | 0 | 0 | 0 | 0 | 0 | 1 | 0 |
| Strongly Disagree | 0 | 1 | 0 | 0 | 0 | 0 | 0 |

[Signature]
PRINCIPAL
PRINCE DR. K. VASUDEVAN COLLEGE
ENGINEERING AND TECHNOLOGY
POMMAR, CHENNAI-600 127



PRINCE Dr. K. VASUDEVAN COLLEGE OF ENGINEERING AND TECHNOLOGY

(Approved by AICTE, Affiliated to Anna University & ISO 9001:2015 Certified Institution)
Medavakkam-Mambakkam Main Road, Ponmar, Chennai-600127

FACULTY FEEDBACK ON SYLLABUS – ANALYSIS REPORT

Academic Year

2020-21

Department

Electronics and Communication Engineering

Number of Respondents

6

Rate the curriculum / syllabus on the following points

| S. No | Feedback on Syllabus | Strongly agree | Agree | Neutral | Disagree | Strongly Disagree |
|-------|--|----------------|-------|---------|----------|-------------------|
| | | 5 | 4 | 3 | 2 | 1 |
| 1 | Is the course objective are illustrated clearly to the need of the students? | 9 | 3 | 0 | 0 | 0 |
| 2 | Are you satisfied with the existing syllabus which you are handling? | 9 | 2 | 1 | 0 | 0 |
| 3 | Is the syllabus designed based on average student level? | 8 | 4 | 0 | 0 | 0 |
| 4 | Is the syllabus providing the basic knowledge to carry out the field project/Internship? | 9 | 2 | 0 | 1 | 0 |
| 5 | Is the curriculum designed by university is more relevant to the department background? | 9 | 2 | 1 | 0 | 0 |
| 6 | Is the syllabus well organized and easy to follow by the students? | 7 | 4 | 1 | 0 | 0 |


PRINCIPAL
PRINCE DR. K. VASUDEVAN COLLEGE OF
ENGINEERING AND TECHNOLOGY
PONMAR, CHENNAI-600 127.



PRINCE Dr. K. VASUDEVAN COLLEGE OF ENGINEERING AND TECHNOLOGY

(Approved by AICTE, Affiliated to Anna University & ISO 9001:2015 Certified Institution)
Medavakkam-Mambakkam Main Road, Ponmar, Chennai-600127

| | | | | | | |
|---|---|---|---|---|---|---|
| 7 | Is the syllabus covered fundamentals, advanced topics and ensures balance between theory & Applications | 8 | 4 | 0 | 0 | 0 |
|---|---|---|---|---|---|---|

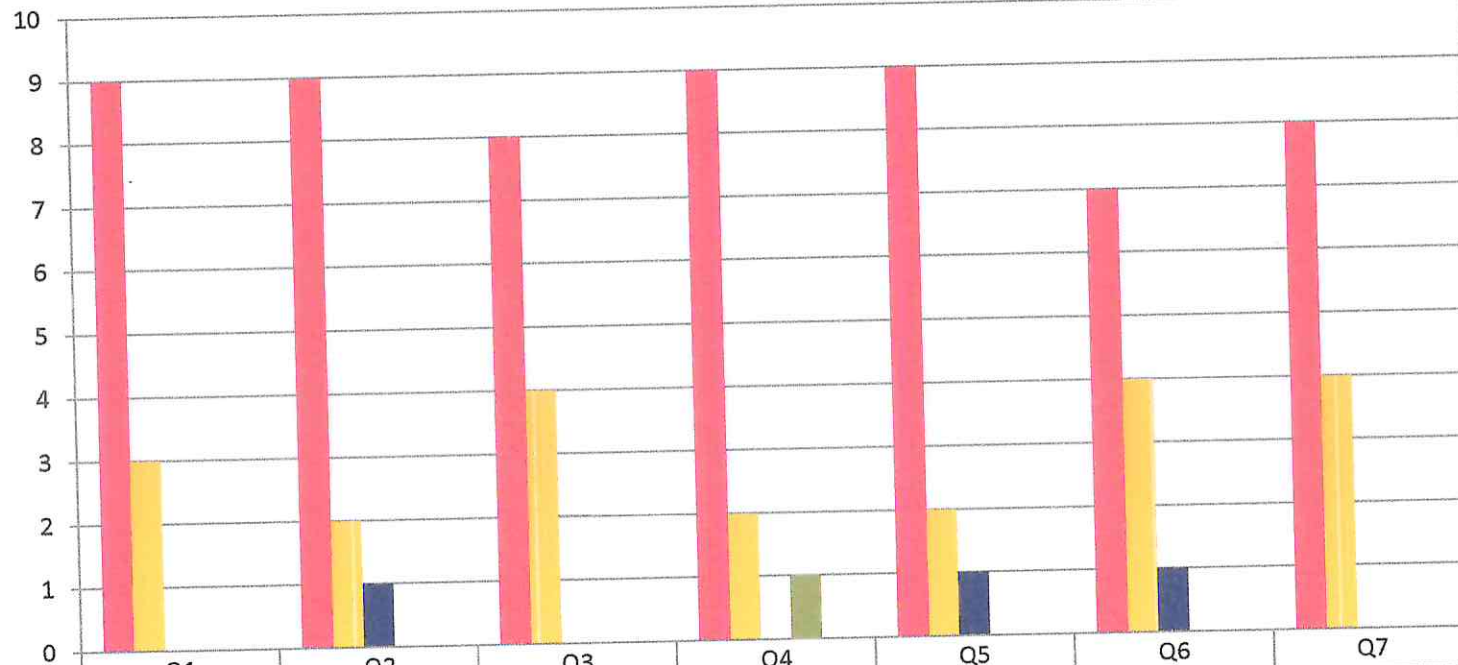
PRINCIPAL
PRINCE DR. K. VASUDEVAN COLLEGE OF
ENGINEERING AND TECHNOLOGY
PONMAR, CHENNAI-600 127.



PRINCE Dr. K. VASUDEVAN COLLEGE OF ENGINEERING AND TECHNOLOGY

(Approved by AICTE, Affiliated to Anna University & ISO 9001:2015 Certified Institution)
Medavakkam-Mambakkam Main Road, Ponmar, Chennai-600127

FACULTY FEEDBACK ON SYLLABUS - 2020-2021 Electronics and Communication Engineering (NUMBER OF RESPONDENTS - 6)



| | Q1 | Q2 | Q3 | Q4 | Q5 | Q6 | Q7 |
|-------------------|----|----|----|----|----|----|----|
| Strongly agree | 9 | 9 | 8 | 9 | 9 | 7 | 8 |
| Agree | 3 | 2 | 4 | 2 | 2 | 4 | 4 |
| Neutral | 0 | 1 | 0 | 0 | 1 | 1 | 0 |
| Disagree | 0 | 0 | 0 | 1 | 0 | 0 | 0 |
| Strongly Disagree | 0 | 0 | 0 | 0 | 0 | 0 | 0 |

PRINCIPAL
PRINCE DR. K. VASUDEVAN COLLEGE
ENGINEERING AND TECHNOLOGY
PONMAR, CHENNAI-600 127.



PRINCE Dr. K. VASUDEVAN COLLEGE OF ENGINEERING AND TECHNOLOGY

(Approved by AICTE, Affiliated to Anna University & ISO 9001:2015 Certified Institution)
Medavakkam-Mambakkam Main Road, Ponmar, Chennai-600127

FACULTY FEEDBACK ON SYLLABUS – ANALYSIS REPORT

Academic Year

2020-21

Department

Biomedical Engineering

Number of Respondents

3

Rate the curriculum / syllabus on the following points

| S. No | Feedback on Syllabus | Strongly agree | Agree | Neutral | Disagree | Strongly Disagree |
|-------|---|----------------|-------|---------|----------|-------------------|
| | | 5 | 4 | 3 | 2 | 1 |
| 1 | Is the course objective are illustrated clearly to the need of the students? | 4 | 1 | 0 | 0 | 0 |
| 2 | Are you satisfied with the existing syllabus which you are handling? | 3 | 1 | 0 | 1 | 0 |
| 3 | Is the syllabus designed based on average student level? | 3 | 2 | 0 | 0 | 0 |
| 4 | Is the syllabus providing the basic knowledge to carry out the field project/Internship? | 4 | 1 | 0 | 0 | 0 |
| 5 | Is the curriculum designed by university is more relevant to the department background? | 4 | 1 | 0 | 0 | 0 |
| 6 | Is the syllabus well organized and easy to follow by the students? | 4 | 1 | 0 | 0 | 0 |
| 7 | Is the syllabus covered fundamentals, advanced topics and ensures balance between theory & Applications | 3 | 1 | 1 | 0 | 0 |

PRINCIPAL
PRINCE DR. K. VASUDEVAN COLLEGE OF
ENGINEERING AND TECHNOLOGY
POMMAR, CHENNAI-600 127,



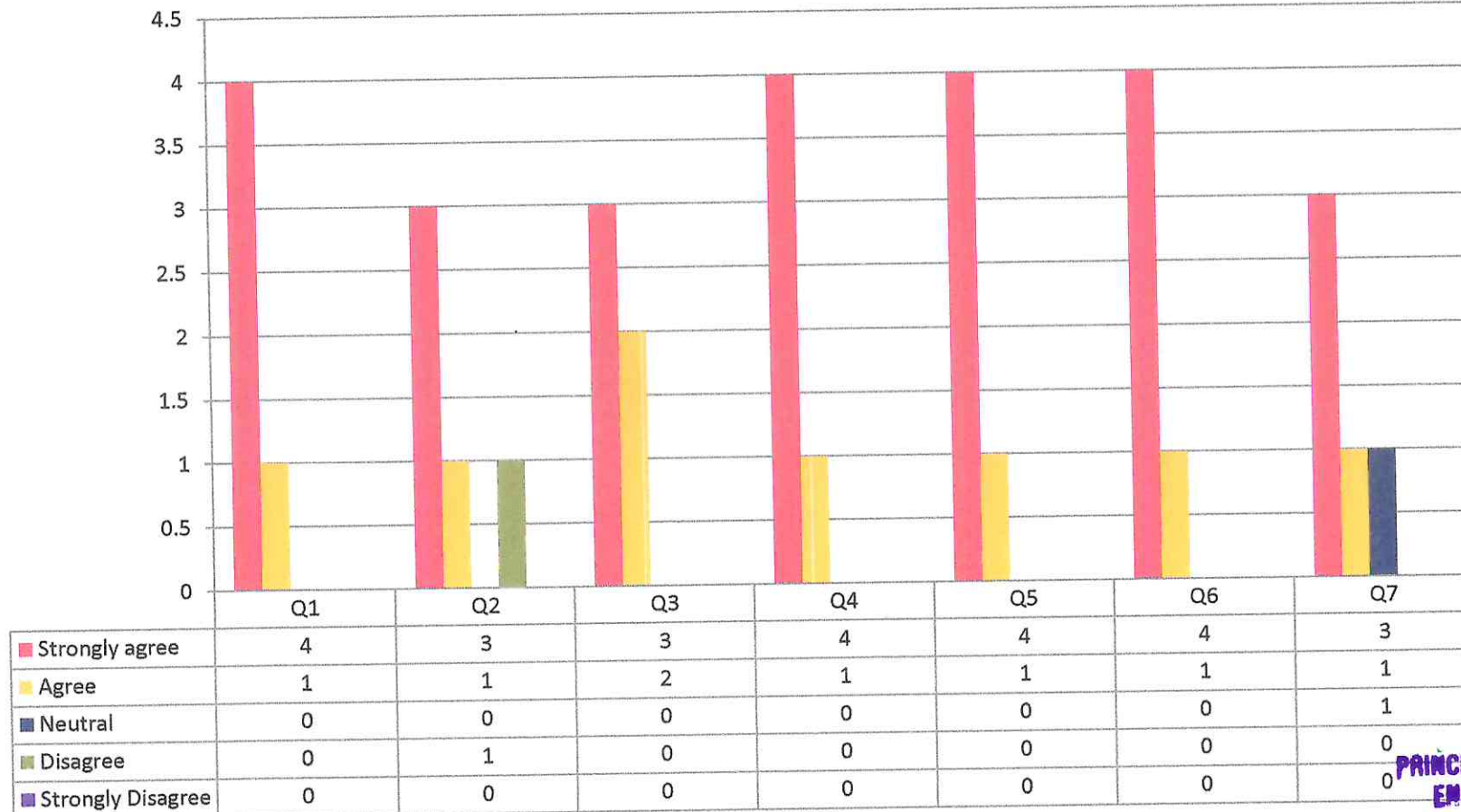
PRINCE Dr. K. VASUDEVAN COLLEGE OF ENGINEERING AND TECHNOLOGY

(Approved by AICTE, Affiliated to Anna University & ISO 9001:2015 Certified Institution)
Medavakkam-Mambakkam Main Road, Ponmar, Chennai-600127

FACULTY FEEDBACK ON SYLLABUS - 2020-2021

Biomedical Engineering

(NUMBER OF RESPONDENTS - 3)



(Signature)

PRINCIPAL
PRINCE DR. K. VASUDEVAN COLLEGE OF ENGINEERING AND TECHNOLOGY
PONMAR, CHENNAI-600127



PRINCE Dr. K. VASUDEVAN COLLEGE OF ENGINEERING AND TECHNOLOGY

(Approved by AICTE, Affiliated to Anna University & ISO 9001:2015 Certified Institution)
Medavakkam-Mambakkam Main Road, Ponmar, Chennai-600127

FACULTY FEEDBACK ON SYLLABUS – ANALYSIS REPORT

Academic Year

2020-21

Department


Artificial Intelligence and Data Science

Number of Respondents

3

Rate the curriculum / syllabus on the following points

| S. No | Feedback on Syllabus | Strongly agree | Agree | Neutral | Disagree | Strongly Disagree |
|-------|--|----------------|-------|---------|----------|-------------------|
| | | 5 | 4 | 3 | 2 | 1 |
| 1 | Is the course objective are illustrated clearly to the need of the students? | 3 | 0 | 0 | 0 | 0 |
| 2 | Are you satisfied with the existing syllabus which you are handling? | 1 | 2 | 0 | 0 | 0 |
| 3 | Is the syllabus designed based on average student level? | 3 | 0 | 0 | 0 | 0 |
| 4 | Is the syllabus providing the basic knowledge to carry out the field project/Internship? | 1 | 2 | 0 | 0 | 0 |
| 5 | Is the curriculum designed by university is more relevant to the department background? | 3 | 0 | 0 | 0 | 0 |
| 6 | Is the syllabus well organized and easy to follow by the students? | 2 | 1 | 0 | 0 | 0 |


PRINCIPAL
PRINCE DR. K. VASUDEVAN COLLEGE OF
ENGINEERING AND TECHNOLOGY
PONMAR, CHENNAI-600 127.



PRINCE Dr. K. VASUDEVAN COLLEGE OF ENGINEERING AND TECHNOLOGY

(Approved by AICTE, Affiliated to Anna University & ISO 9001:2015 Certified Institution)
Medavakkam-Mambakkam Main Road, Ponmar, Chennai-600127

| | | | | | | |
|---|---|---|---|---|---|---|
| 7 | Is the syllabus covered fundamentals, advanced topics and ensures balance between theory & Applications | 3 | 0 | 0 | 0 | 0 |
|---|---|---|---|---|---|---|

PRINCIPAL
PRINCE DR. K. VASUDEVAN COLLEGE OF
ENGINEERING AND TECHNOLOGY
PONMAR, CHENNAI-600 127.



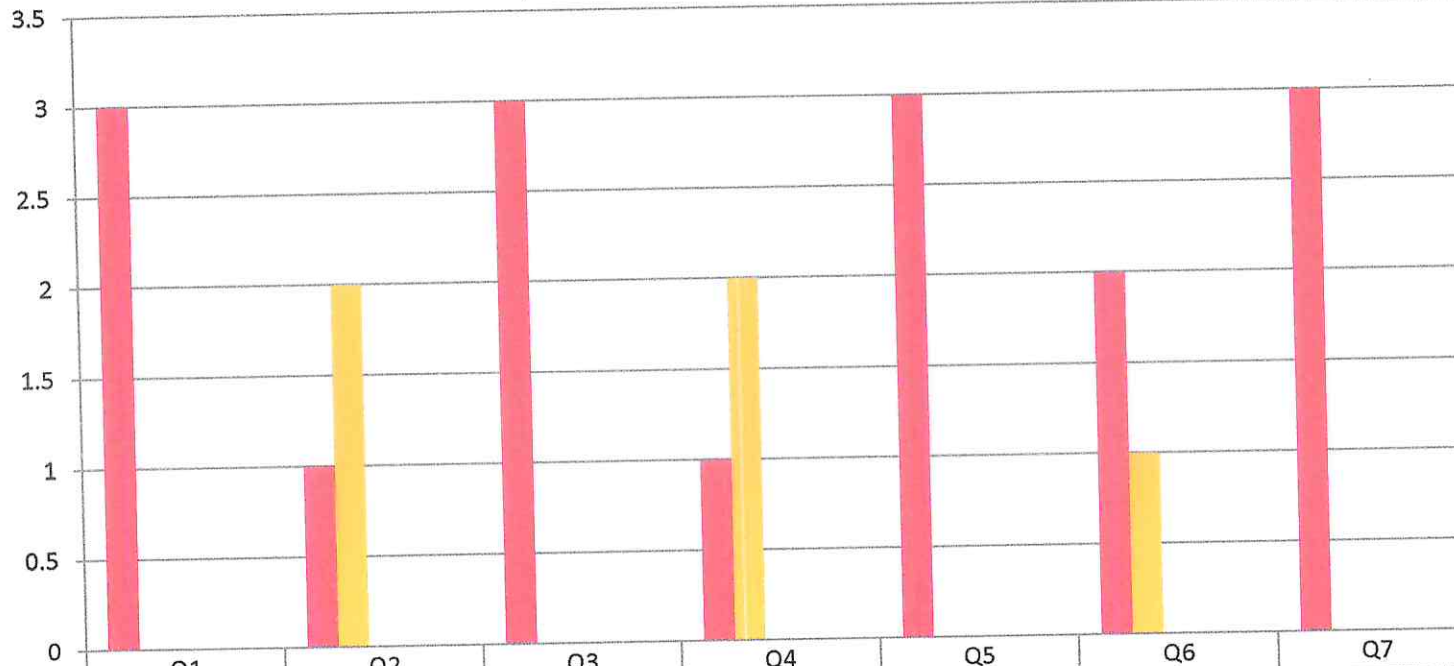
PRINCE Dr. K. VASUDEVAN COLLEGE OF ENGINEERING AND TECHNOLOGY

(Approved by AICTE, Affiliated to Anna University & ISO 9001:2015 Certified Institution)
Medavakkam-Mambakkam Main Road, Ponmar, Chennai-600127

FACULTY FEEDBACK ON SYLLABUS - 2020-2021

Artificial Intelligence and Data Science

(NUMBER OF RESPONDENTS - 3)



| | Q1 | Q2 | Q3 | Q4 | Q5 | Q6 | Q7 |
|-------------------|----|----|----|----|----|----|----|
| Strongly agree | 3 | 1 | 3 | 1 | 3 | 2 | 3 |
| Agree | 0 | 2 | 0 | 2 | 0 | 1 | 0 |
| Neutral | 0 | 0 | 0 | 0 | 0 | 0 | 0 |
| Disagree | 0 | 0 | 0 | 0 | 0 | 0 | 0 |
| Strongly Disagree | 0 | 0 | 0 | 0 | 0 | 0 | 0 |

[Signature]

PRINCIPAL
PRINCE DR. K. VASUDEVAN COLLEGE
ENGINEERING AND TECHNOLOGY
PONMAR, CHENNAI-600 127.



PRINCE Dr. K.VASUDEVAN COLLEGE OF ENGINEERING AND TECHNOLOGY

(Approved by AICTE, Affiliated to Anna University & ISO 9001:2015 Certified Institution)
Medavakkam-Mambakkam Main Road, Ponmar, Chennai-600127

FACULTY FEEDBACK ON SYLLABUS – ANALYSIS REPORT

Academic Year

2020-21

Department

Science and Humanities

Number of Respondents

4

Rate the curriculum / syllabus on the following points

| S. No | Feedback on Syllabus | Strongly agree | Agree | Neutral | Disagree | Strongly Disagree |
|-------|--|----------------|-------|---------|----------|-------------------|
| | | 5 | 4 | 3 | 2 | 1 |
| 1 | Is the course objective are illustrated clearly to the need of the students? | 1 | 2 | 1 | 0 | 0 |
| 2 | Are you satisfied with the existing syllabus which you are handling? | 0 | 2 | 1 | 1 | 0 |
| 3 | Is the syllabus designed based on average student level? | 2 | 1 | 1 | 0 | 0 |
| 4 | Is the syllabus providing the basic knowledge to carry out the field project/Internship? | 1 | 2 | 1 | 0 | 0 |
| 5 | Is the curriculum designed by university is more relevant to the department background? | 0 | 3 | 1 | 0 | 0 |
| 6 | Is the syllabus well organized and easy to follow by the students? | 2 | 1 | 1 | 0 | 0 |


PRINCIPAL
PRINCE DR. K. VASUDEVAN COLLEGE OF
ENGINEERING AND TECHNOLOGY
PONMAR, CHENNAI 600 127



PRINCE Dr. K. VASUDEVAN COLLEGE OF ENGINEERING AND TECHNOLOGY

(Approved by AICTE, Affiliated to Anna University & ISO 9001:2015 Certified Institution)
Medavakkam-Mambakkam Main Road, Ponmar, Chennai-600127

| | | | | | | |
|---|---|---|---|---|---|---|
| 7 | Is the syllabus covered fundamentals, advanced topics and ensures balance between theory & Applications | 2 | 0 | 2 | 0 | 0 |
|---|---|---|---|---|---|---|

PRINCIPAL
PRINCE DR. K. VASUDEVAN COLLEGE OF
ENGINEERING AND TECHNOLOGY
PONMAR, CHENNAI-600 127.



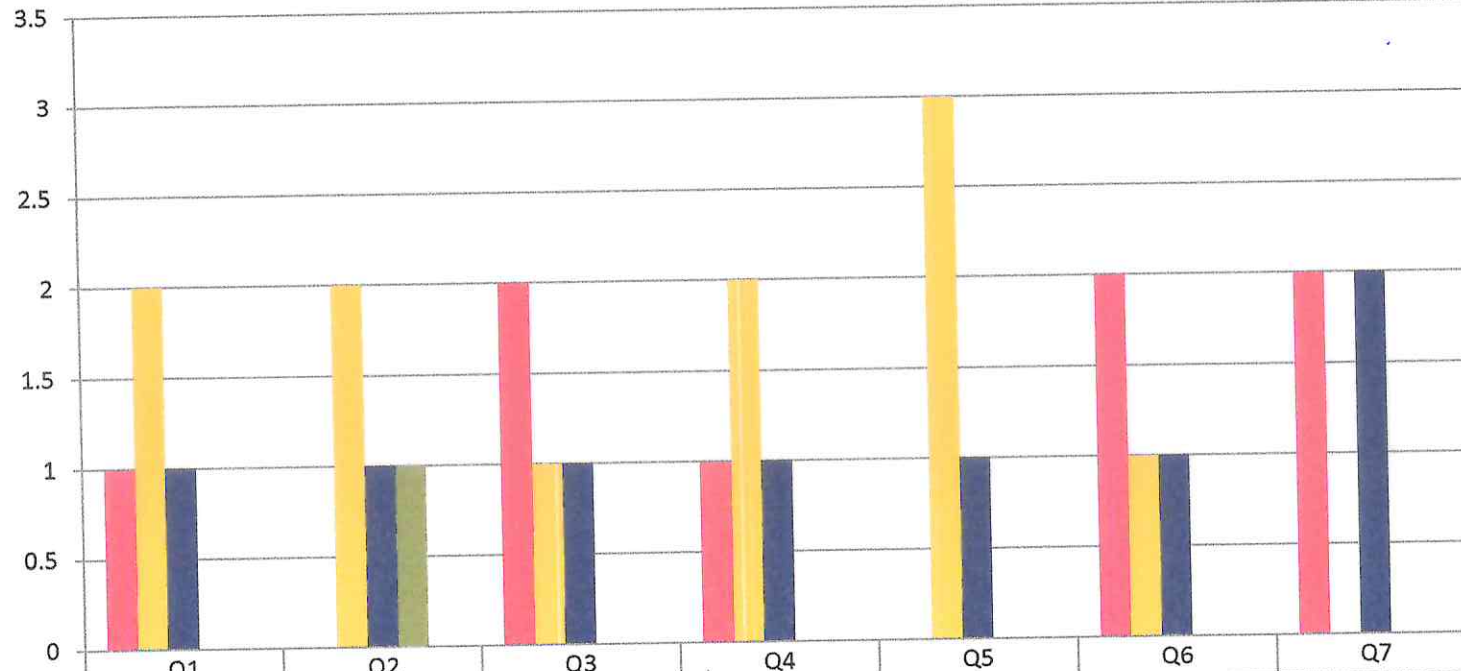
PRINCE Dr. K. VASUDEVAN COLLEGE OF ENGINEERING AND TECHNOLOGY

(Approved by AICTE, Affiliated to Anna University & ISO 9001:2015 Certified Institution)
Medavakkam-Mambakkam Main Road, Ponmar, Chennai-600127

FACULTY FEEDBACK ON SYLLABUS - 2020-2021

Science and Humanities

(NUMBER OF RESPONDENTS - 4)



| | Q1 | Q2 | Q3 | Q4 | Q5 | Q6 | Q7 |
|-------------------|----|----|----|----|----|----|----|
| Strongly agree | 1 | 0 | 2 | 1 | 0 | 2 | 2 |
| Agree | 2 | 2 | 1 | 2 | 3 | 1 | 0 |
| Neutral | 1 | 1 | 1 | 1 | 1 | 1 | 2 |
| Disagree | 0 | 1 | 0 | 0 | 0 | 0 | 0 |
| Strongly Disagree | 0 | 0 | 0 | 0 | 0 | 0 | 0 |

[Signature]

PRINCIPAL

**PRINCE DR. K. VASUDEVAN COLLEGE
ENGINEERING AND TECHNOLOGY
PONMAR, CHENNAI-600 127**



PRINCE Dr. K. VASUDEVAN COLLEGE OF ENGINEERING AND TECHNOLOGY

(Approved by AICTE, Affiliated to Anna University & ISO 9001:2015 Certified Institution)
Medavakkam-Mambakkam Main Road, Ponmar, Chennai-600127

FACULTY FEEDBACK ON SYLLABUS – ANALYSIS REPORT

Academic Year

2020-21

Department

Mechanical Engineering

Number of Respondents

4

Rate the curriculum / syllabus on the following points

| S. No | Feedback on Syllabus | Strongly agree | Agree | Neutral | Disagree | Strongly Disagree |
|-------|---|----------------|-------|---------|----------|-------------------|
| | | 5 | 4 | 3 | 2 | 1 |
| 1 | Is the course objective are illustrated clearly to the need of the students? | 2 | 1 | 1 | 0 | 0 |
| 2 | Are you satisfied with the existing syllabus which you are handling? | 1 | 3 | 0 | 0 | 0 |
| 3 | Is the syllabus designed based on average student level? | 2 | 1 | 0 | 1 | 0 |
| 4 | Is the syllabus providing the basic knowledge to carry out the field project/Internship? | 1 | 3 | 0 | 0 | 0 |
| 5 | Is the curriculum designed by university is more relevant to the department background? | 1 | 3 | 0 | 0 | 0 |
| 6 | Is the syllabus well organized and easy to follow by the students? | 2 | 2 | 0 | 0 | 0 |
| 7 | Is the syllabus covered fundamentals, advanced topics and ensures balance between theory & Applications | 1 | 2 | 1 | 0 | 0 |

PRINCIPAL
PRINCE DR. K. VASUDEVAN COLLEGE OF
ENGINEERING AND TECHNOLOGY
PONMAR, CHENNAI-600 127.



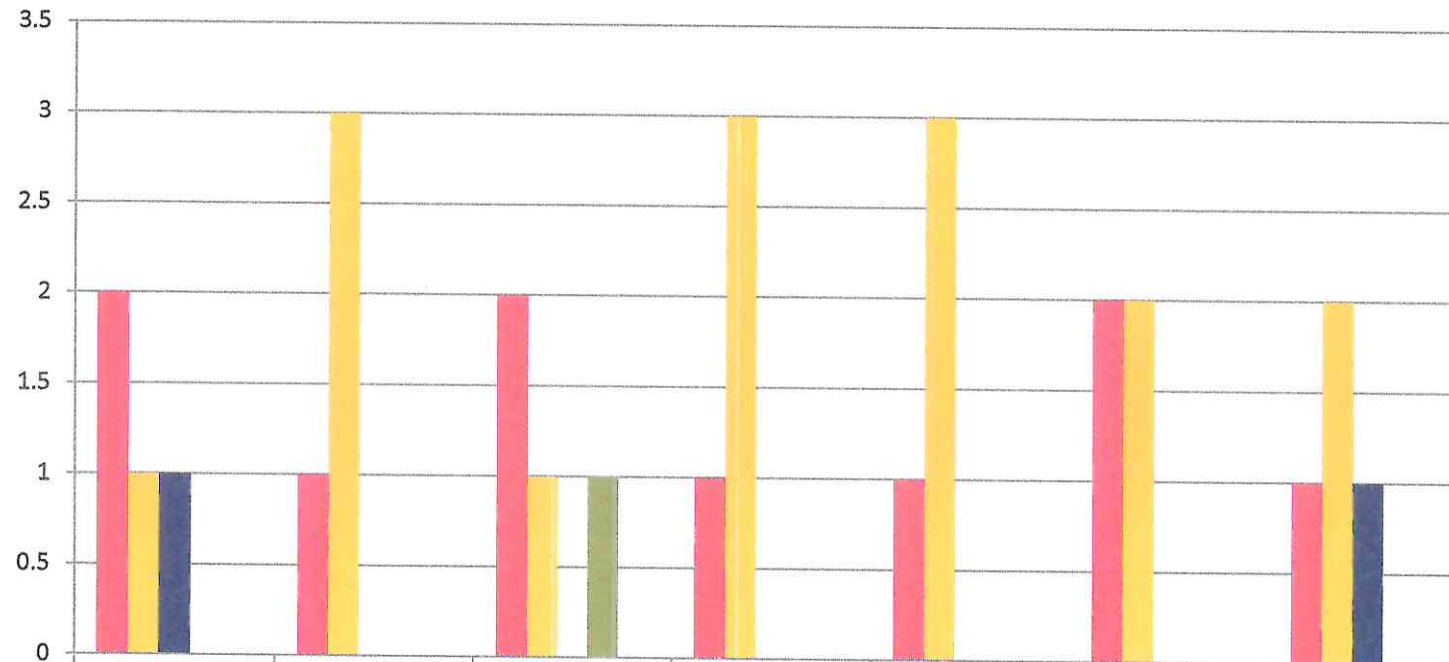
PRINCE Dr. K. VASUDEVAN COLLEGE OF ENGINEERING AND TECHNOLOGY

(Approved by AICTE, Affiliated to Anna University & ISO 9001:2015 Certified Institution)

Medavakkam-Mambakkam Main Road, Ponmar, Chennai-600127

FACULTY FEEDBACK ON SYLLABUS - 2020-2021

Mechanical Engineering (NUMBER OF RESPONDENTS - 4)



| | Q1 | Q2 | Q3 | Q4 | Q5 | Q6 | Q7 |
|-------------------|----|----|----|----|----|----|----|
| Strongly agree | 2 | 1 | 2 | 1 | 1 | 2 | 1 |
| Agree | 1 | 3 | 1 | 3 | 3 | 2 | 2 |
| Neutral | 1 | 0 | 0 | 0 | 0 | 0 | 1 |
| Disagree | 0 | 0 | 1 | 0 | 0 | 0 | 0 |
| Strongly Disagree | 0 | 0 | 0 | 0 | 0 | 0 | 0 |

(Handwritten Signature)

PRINCIPAL

**PRINCE DR. K. VASUDEVAN COLLEGE OF ENGINEERING AND TECHNOLOGY
PONMAR, CHENNAI-600 127.**